

P-Series Thor Interchange

Interchange Data:

- Thor Finger-Lock Interchange
- Interchanges with Thor PHC-Series, National Series 'A', and Dixon Dual-Lock.

Materials:

- Machined components are manufactured using solid Steel, Brass, or 303 Stainless Steel bar stock.
- Phosphor Bronze retaining ring and spring maximise corrosion resistance and extend service life.
- Steel componentry is plated using ROHS Compliant Trivalent Chrome.
- Steel couplings have a Zinc Cast sleeve



Seal Components:

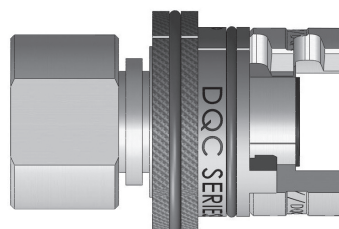
- Nitrile (Buna-N) seals are standard, temperature range -40°C to +121°C (-40°F to +250°F)

Rated Pressure Chart:

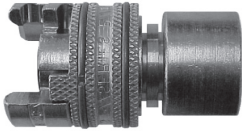
P-SERIES THOR INTERCHANGE (CONNECTED)												
BODY SIZE	STEEL COUPLER/PLUG				BRASS COUPLER/PLUG				303 STAINLESS STEEL COUPLER/PLUG			
	Max. Working		Burst		Max. Working		Burst		Max. Working		Burst	
	PSI	Bar	PSI	Bar	PSI	Bar	PSI	Bar	PSI	Bar	PSI	Bar
1/2"	300	20	2,600	180	300	20	3,500	240	300	20	4,500	310

Technical Specifications:

BODY SIZE	INTERCHANGE STANDARDS				FUNCTIONAL PARAMETERS					
	U.S. MILITARY	U.S. GOVERNMENT	INTERNATIONAL STANDARDS	ANSI/NFPA STANDARDS	LOCKING QUANTITY	AIR INCLUSION	FLUID LOSS	VACUUM INCH HG	FLOW ΔP = 15 PSI CFM	
1/2"	-	-	-	-	Latch Fingers	N/A	N/A	N/R	255	



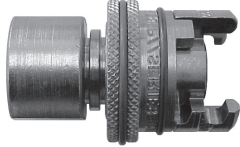
P Series Coupler with -FS]
Flanged Sleeve Option



(Female Thread)

P-SERIES THOR INTERCHANGE (COUPLER)

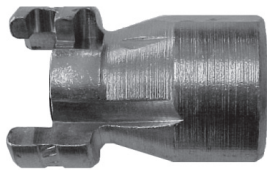
PART NO.	BODY SIZE	THREAD SIZE	BODY MATERIAL
4PF4	1/2"	1/2"-14 NPTF	Steel
4PF6	1/2"	3/4"-14 NPTF	Steel
4PF6-B	1/2"	3/4"-14 NPTF	Brass
4PF6-S	1/2"	3/4"-14 NPTF	303 Stainless Steel



(Female Thread)

P-SERIES THOR INTERCHANGE (FLANGED-SLEEVE COUPLER)

PART NO.	BODY SIZE	THREAD SIZE	BODY MATERIAL
4PF4-FS	1/2"	1/2"-14 NPTF	Steel
4PF6-FS	1/2"	3/4"-14 NPTF	Steel



(Female Thread)

P-SERIES THOR INTERCHANGE (NIPPLE)

PART NO.	BODY SIZE	THREAD SIZE	BODY MATERIAL
P4F3	1/2"	3/8"-18 NPTF	Steel
P4F4	1/2"	1/2"-14 NPTF	Steel
P4F4-B	1/2"	1/2"-14 NPTF	Brass
P4F6	1/2"	3/4"-14 NPTF	Steel
P4F6-B	1/2"	3/4"-14 NPTF	Brass
P4F6-S	1/2"	3/4"-14 NPTF	303 Stainless Steel
P4F8	1/2"	1"-11 1/2 NPTF	Steel
P4F8-B	1/2"	1"-11 1/2 NPTF	Brass



(Male Thread)

P-SERIES THOR INTERCHANGE (COUPLER)

PART NO.	BODY SIZE	THREAD SIZE	BODY MATERIAL
4PM3	1/2"	3/8"-18 NPTF	Steel
4PM4	1/2"	1/2"-14 NPTF	Steel
4PM6	1/2"	3/4"-14 NPTF	Steel
4PM6-S	1/2"	3/4"-14 NPTF	303 Stainless Steel

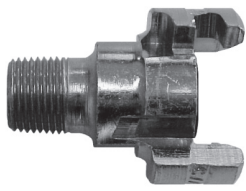


(Male Thread)

P-SERIES THOR INTERCHANGE (FLANGED-SLEEVE COUPLER)

PART NO.	BODY SIZE	THREAD SIZE	PART MATERIAL
4PM3-FS	1/2"	3/8"-18 NPTF	Steel
4PM4-FS	1/2"	1/2"-14 NPTF	Steel
4PM6-FS	1/2"	3/4"-14 NPTF	Steel

Quick Release Couplings



(Male Thread)

P-SERIES THOR INTERCHANGE (NIPPLE)

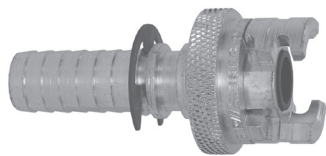
PART NO.	BODY SIZE	THREAD SIZE	BODY MATERIAL
P4M3	1/2"	3/8"-18 NPTF	Steel
P4M4	1/2"	1/2"-14 NPTF	Steel
P4M4-B	1/2"	1/2"-14 NPTF	Brass
P4M6	1/2"	3/4"-14 NPTF	Steel
P4M6-B	1/2"	3/4"-14 NPTF	Brass
P4M6-S	1/2"	3/4"-14 NPTF	303 Stainless Steel
P4M8	1/2"	1"-11 1/2 NPTF	Steel
P4M8-B	1/2"	1"-11 1/2 NPTF	Brass



(Hose Barb - now accepts light duty ferrules)

P-SERIES THOR INTERCHANGE (COUPLER)

PART NO.	BODY SIZE	BARB CONFIGURATION	BODY MATERIAL
4PS3	1/2"	3/8" Hose Barb	Steel
4PS4	1/2"	1/2" Hose Barb	Steel
4PS4-B	1/2"	1/2" Hose Barb	Brass
4PS6	1/2"	3/4" Hose Barb	Steel
4PS6-B	1/2"	3/4" Hose Barb	Brass
4PS6-S	1/2"	3/4" Hose Barb	303 Stainless Steel
4PS8	1/2"	1" Hose Barb	Steel
4PS8-B	1/2"	1" Hose Barb	Brass



(Hose Barb - now accepts light duty ferrules)

P-SERIES THOR INTERCHANGE (FLANGED-SLEEVE COUPLER)

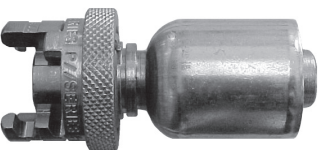
PART NO.	BODY SIZE	BARB CONFIGURATION	BODY MATERIAL
4PS3-FS	1/2"	3/8" Hose Barb	Steel
4PS4-FS	1/2"	1/2" Hose Barb	Steel
4PS6-FS	1/2"	3/4" Hose Barb	Steel
4PS8-FS	1/2"	1" Hose Barb	Steel



(Hose Barb with Staked Ferrule)

P-SERIES THOR INTERCHANGE (COUPLER)

PART NO.	BODY SIZE	HOSE (ID) OD RANGE	BODY MATERIAL
4PCS4-WF43	1/2"	(1/2") 27/32" to 11/32"	Steel
4PCS4-B-WF43	1/2"	(1/2") 27/32" to 11/32"	Brass
4PCS6-WF63	1/2"	(3/4") 15/32" to 11/32"	Steel
4PCS6-B-WF63	1/2"	(3/4") 15/32" to 11/32"	Brass



(Hose Barb with Staked Ferrule)

P-SERIES THOR INTERCHANGE (FLANGED-SLEEVE COUPLER)

PART NO.	BODY SIZE	HOSE (ID) OD RANGE	BODY MATERIAL
4PCS4-FS-WF43	1/2"	(1/2") 27/32" to 11/32"	Steel
4PCS6-FS-WF63	1/2"	(3/4") 15/32" to 11/32"	Steel

Y